

Description

ANI-KSW10004 Galilee Series

Broadband Ceiling mount IDAS antenna

617 – 6000MHz for small Cell and In-door applications.



Antenna Specification

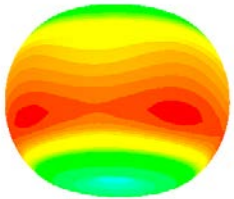
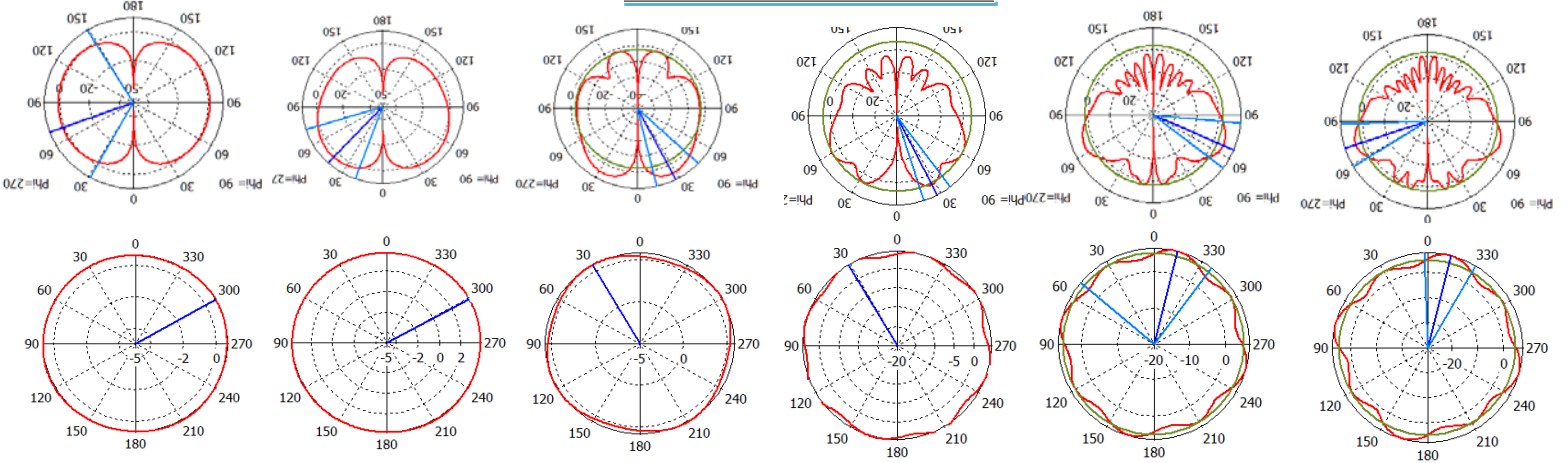
Frequency Band [MHz]	617-790	790-960	1695-1780	1780-1990	1990-2180	2305-2360	2360-2700	2700-3200	3200-5100	5100-6000
Input Connector Type	1x 4.3-10(F) DIN w/ pigtail (18", 46cm)									
VSWR/Return Loss	<1.7:1 / 11.6 dB									
Impedance	50 Ω									
Polarization	Vertical									
Horizontal Beamwidth	Omni (360°)									
Max. Gain	1 dBi	2.5 dBi	5.5 dBi	6.0 dBi	6.0 dBi	6.2 dBi	6.0 dBi	5.5 dBi	6.0 dBi	6.5 dBi
Max Power / Port	50 Watts at ambient temperature 77°F (25°C)									
PIM @ 2x43 dBm	<-153 dBc									

Mechanical Specification

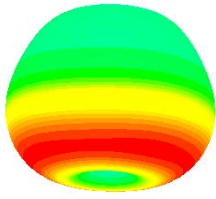
Operating Temperature	-40° to 158°F (-40° to +70°C)
Antenna Weight	1.3 lbs (600g)
Antenna Diameter	11" (280 mm)
Antenna Height	5" (130 mm)
Radome Material (can withstand Plenum Spaces – low smoke))	PC / ABS
Flammability rating	UL 94-V0
RoHS	Compliant
Radome Color	White
Ingress Protection	Indoor
Shipping Dimensions - L x W x D	15.7"x13.7"x10" / 400x350x254mm
Shipping Weight (Gross Weight)	4.63 lbs (2.1 kg)
Connector Torque	4.3-10 DIN: 44.3 in-lb (5 Nm)



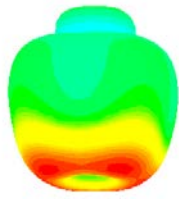
Antenna Patterns



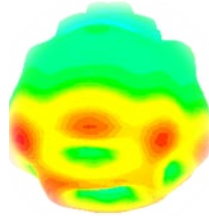
617MHz



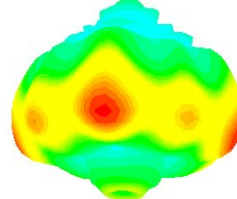
960MHz



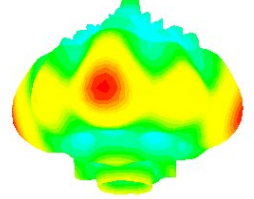
1710MHz



3GHz



5GHz



6GHz